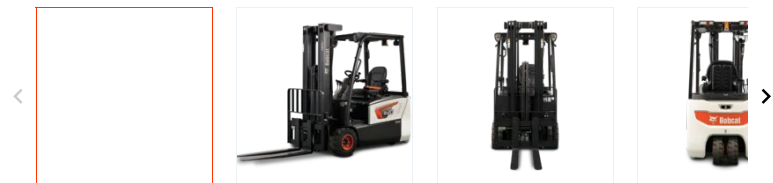


B15T-7 Plus | B18T-7 Plus | B20T-7 Plus

3-Wheel Electric Cushion / Pneumatic Tire Forklifts



- Small chassis size fits where others can't
- Available in 36-volt or 48-volt electric
- Capacities range from 3,000 to 4,000 pounds

Contact Dealer for Pricing

[Find a Dealer](#)

[View Current Offers](#)

[Request a Demo](#)

Overview

The operator-focused design of Bobcat® three-wheel electric counterbalance forklifts (available in cushion/pneumatic tire) boosts

productivity, minimizes stress and enhances visibility. With extended maintenance intervals and cutting-edge tech, ownership costs are lowered.

The advanced AC (alternate-current) control systems deliver unmatched power and dependability. Tailorable components ensure an ideal fit for operators, guaranteeing the utmost control and productivity.

# Specs & Compare

3-Wheel Electric Cushion/Pneumatic Tire Forklifts Key Specifications		
B15T-7 Plus	B18T-7 Plus	B20T-7 Plus
Machine Rated Capacity		
3000 lbs	3500 lbs	4000 lbs
Voltage		
36 v	36 v	36 v

Performance		
B15T-7 Plus	B18T-7 Plus	B20T-7 Plus
Load Center		
24 in	24 in	24 in
Travel Speed		
8.7 mph	8.7 mph	8.7 mph
Machine Rated Capacity		
3000 lbs	3500 lbs	4000 lbs

Dimension		
B15T-7 Plus	B18T-7 Plus	B20T-7 Plus
Height - Mast Lowered		
78.7 in	78.7 in	78.7 in
Free Lift		
5.1 in	5.1 in	5.1 in
Overhead Guard Height		
79 in	79 in	79 in
Length		
115.7 in	119.7 in	121.2 in
Turning Radius		

59.6 in	63.6 in	64.9 in
Wheelbase		
52 in	56 in	57 in

▲ Power/Electrical

B15T-7 Plus	B18T-7 Plus	B20T-7 Plus
Voltage		
36 v	36 v	36 v